

# Alcohol and accidents

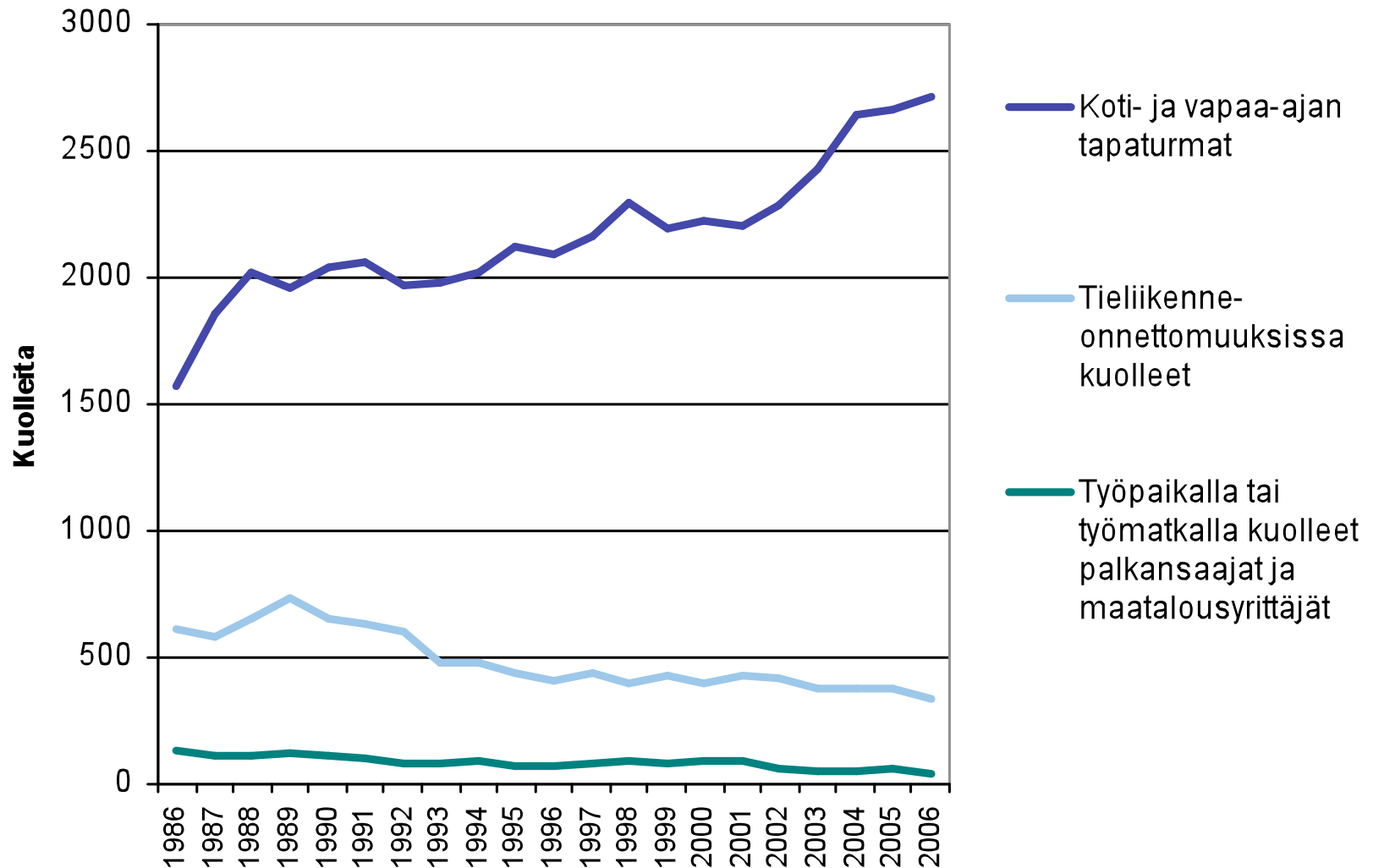
## Kaarina Tamminiemi

# Accidental deaths by type of accident

Deaths in 1986–2006 Source: Statistics Finland SVT, statistics on causes of death, statistics on road traffic accidents, occupational accident



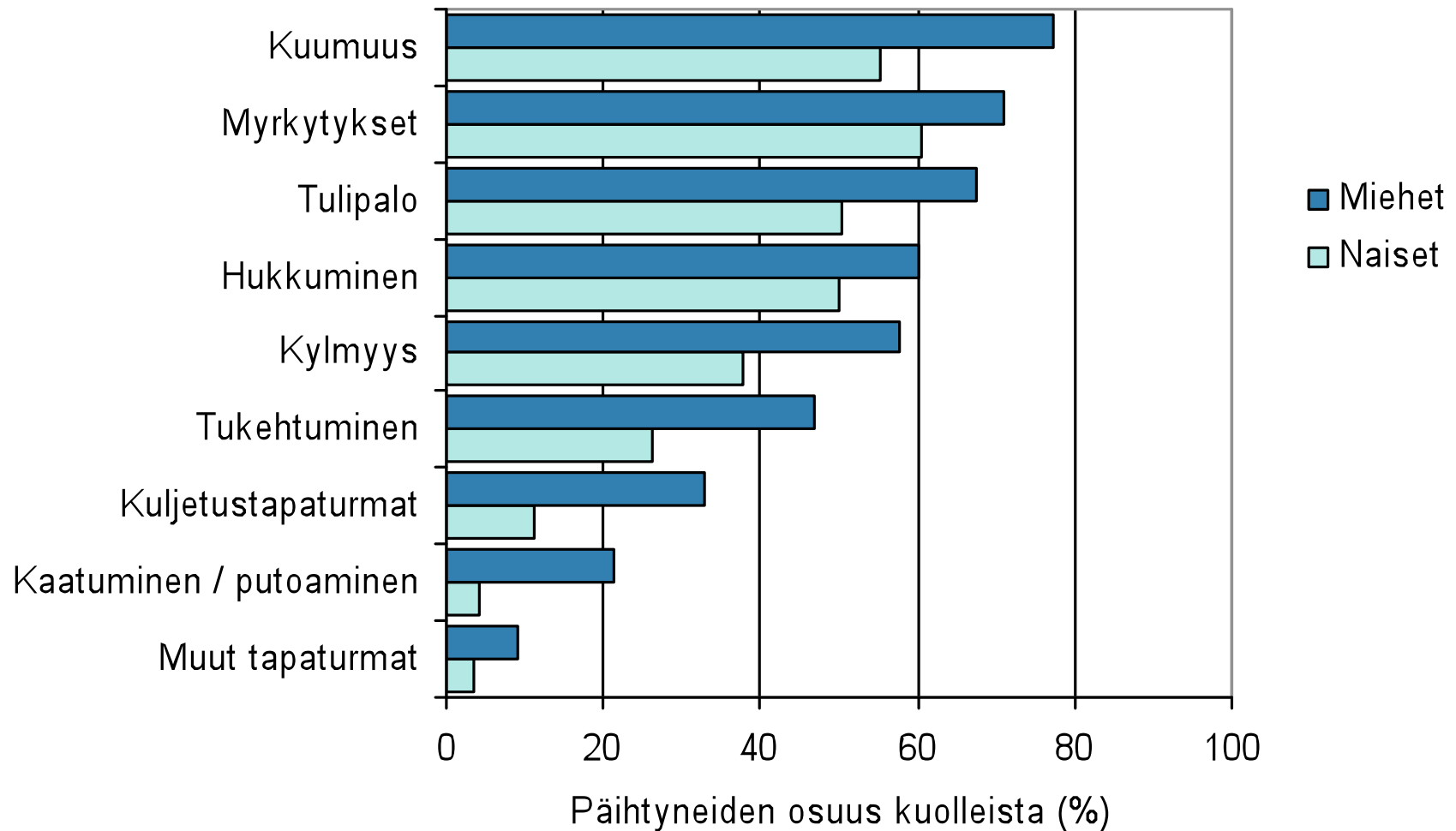
statistics



# Deaths while intoxicated, for selected types of accidents, by percentage

2002–2006

Source: National Institute for Health and Welfare

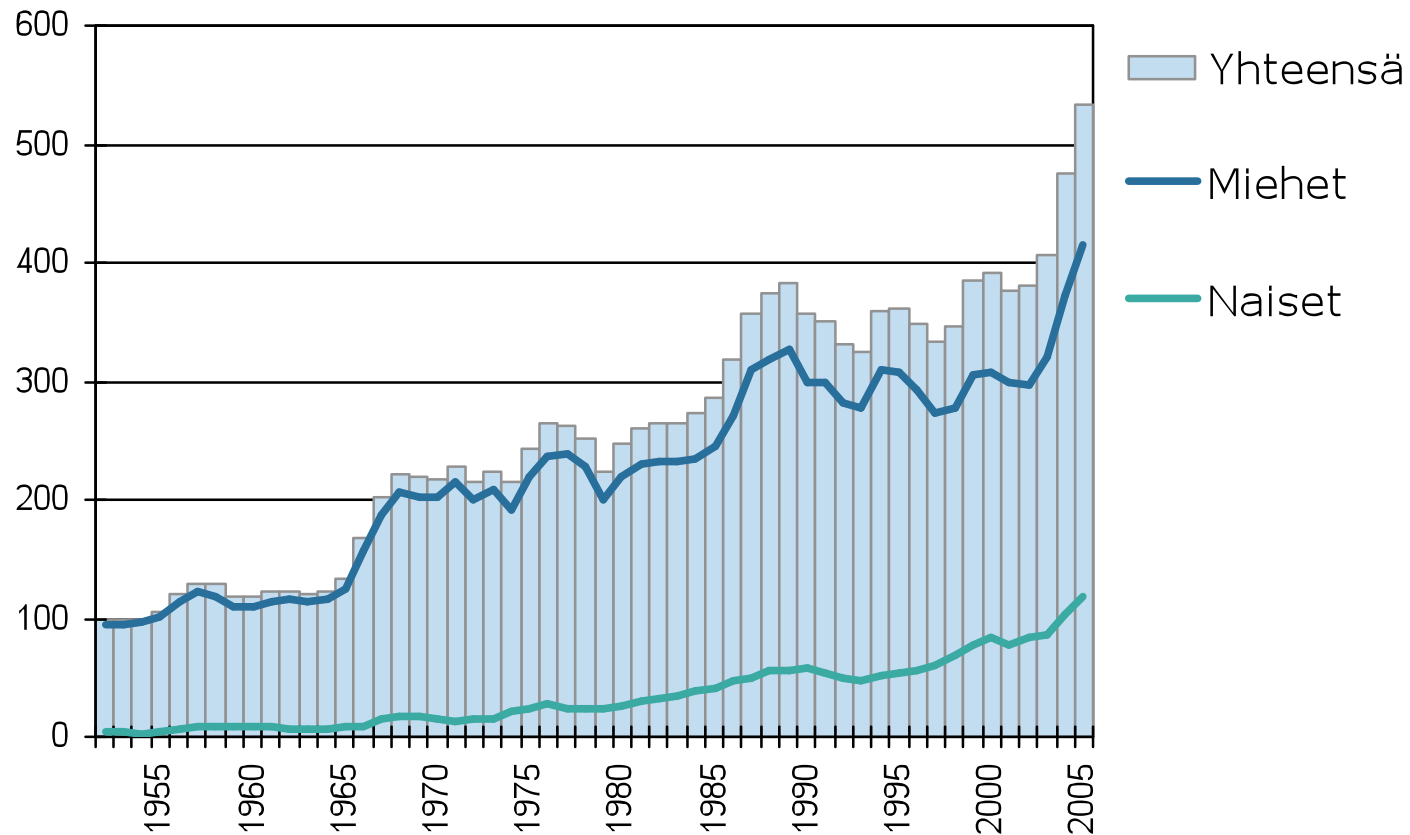




## Accidental alcohol poisonings

Deaths in 1951–2005, rolling three-year average

Source: National Institute for Health and Welfare, accident database



Deaths:

2003: 400

2004: 481

2005: 543

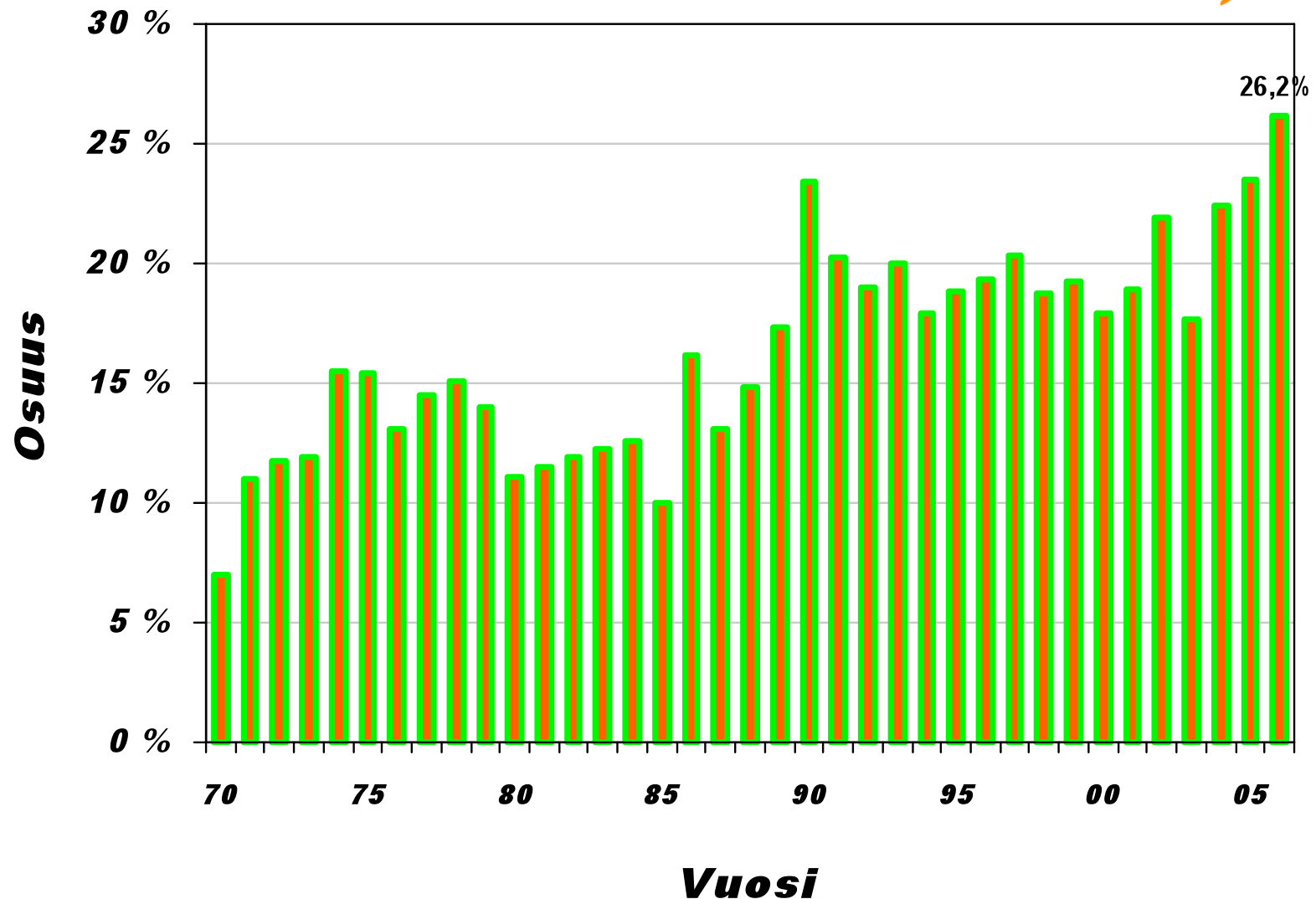
2006: 575

Increase in

2003–2006:

44%

# Deaths caused by drink-driving as a percentage of annual traffic deaths in 1970–2006



Source: Statistics Finland

## Alcohol in traffic



- About 100 people die and 1200 are injured in alcohol-related incidents each year. Roughly 90% of the cases involve drink-driving.
- Alcohol is involved in approximately one in three traffic deaths that occur in a passenger car.
- Of traffic deaths of bicyclists and pedestrians, alcohol plays a part in one out of five.
- The police are informed of 26,000 drink-drivers every year.
- In the traffic stream, one of 650 drivers is driving drunk and one in 140 has had something alcoholic to drink.

## National programmes

- Government Policy Programmes
- Alcohol Programme 2008–2011
- Internal Security and Safety Programme – an Intersectoral Programme Adopted by the Government
- Other programmes:
  - The Health 2015 public health programme
  - The target programme for prevention of home and leisure injuries 2007–2012



# Actions taken by the Finnish Centre for Health Promotion



- Alcohol policy
  - price, availability, and limitations to advertising
- “Päihdepäivät” – annual training event for professionals who work with substance abusers
- Joint campaigns
  - Drink-driving campaign
  - Water safety campaign
  - Campaign to prevent accidents in the home
- A week dedicated to preventive work with substance abuse (Week 45 of 2009)



## Additional information



National programmes

<http://www.stm.fi/>

[www.intermin.fi/en](http://www.intermin.fi/en)

Actions taken by the Finnish Centre for Health Promotion

<http://www.tekry.fi/>

Campaigns

<http://www.liikenneraittius.fi/>

<http://www.viisaastivesilla.fi/>

<http://www.kotitapaturma.fi/>



**Finnish Centre for Health Promotion**  
**Karjalankatu 2 C 63, 00520 HELSINKI, FINLAND**  
**tel. +358 9 7253 0300, fax +358 9 7253 0320**  
**[www.tekry.fi](http://www.tekry.fi)**  
**e-mail address format: [firstname.lastname@tekry.fi](mailto:firstname.lastname@tekry.fi)**



**TERVEYDEN EDISTÄMISEN KESKUS**  
**CENTRET FÖR HÄLSOFRÄMJANDE**  
FINNISH CENTRE FOR HEALTH PROMOTION